

# "Oh, You Guys Make Maps"

Overview of PALARIS maritime  
based activities

Palau Automated Land And Resource Information Systems  
(PALARIS)

David Idip Jr

22<sup>nd</sup> South West Pacific Hydrographic Commission  
Meeting

March 4, 2025

# Establishment and Mandate

- Established in 1998 under Bureau of Lands and Survey
- Currently under Bureau of Budget and Planning , Ministry of Finance
- Mandate – Support spatial data needs of National, state and local agencies.
  - Data collection
  - Data Analysis
  - Data Management
  - Data Dissemination
  - Project support
  - Knowledge Exchange/Trainings

# Data Collection

- Satellite Platforms - (Worldview, Sentinel, Landsat and etc)
- Partners - (CRRF, PICRC and etc)
- Online (Meteorological information, Imagery and etc)
- Field collection (GNSS, GPS, UAV and etc)
- Data procurement (LiDAR s



Autel EVO RTK



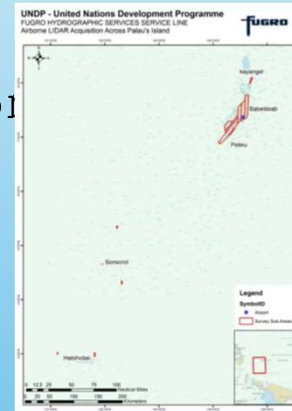
Carlson BRx7



WingtraOne

# LiDAR Survey

- Fugro – Funded by Government of Japan
  - Collection – March 2021
  - Terrestrial (100 m buffer along coastline)
  - H-UTM 53N      V-EGM08
  - Data
    - Aerial image (25 cm)
    - Point cloud
    - DEM (1m)
    - DSM (1m)
    - Intensity



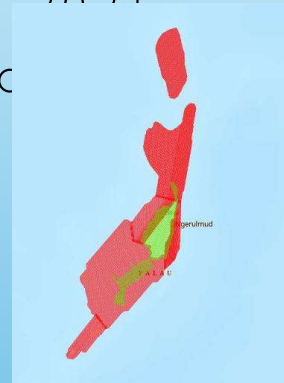
LADS HD+ System



The RIEGL VQ-820-G

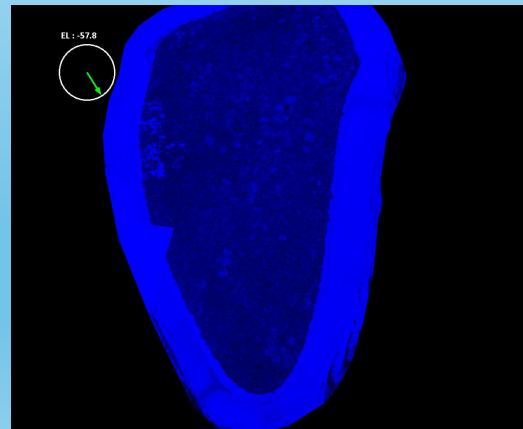
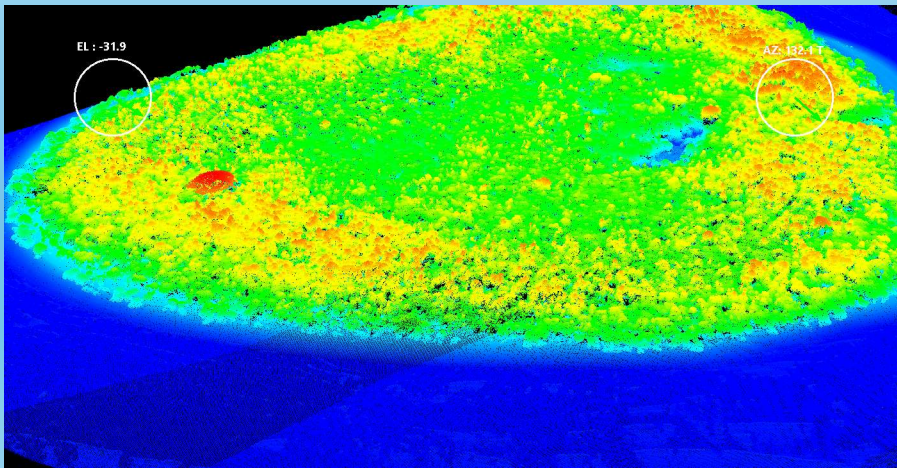
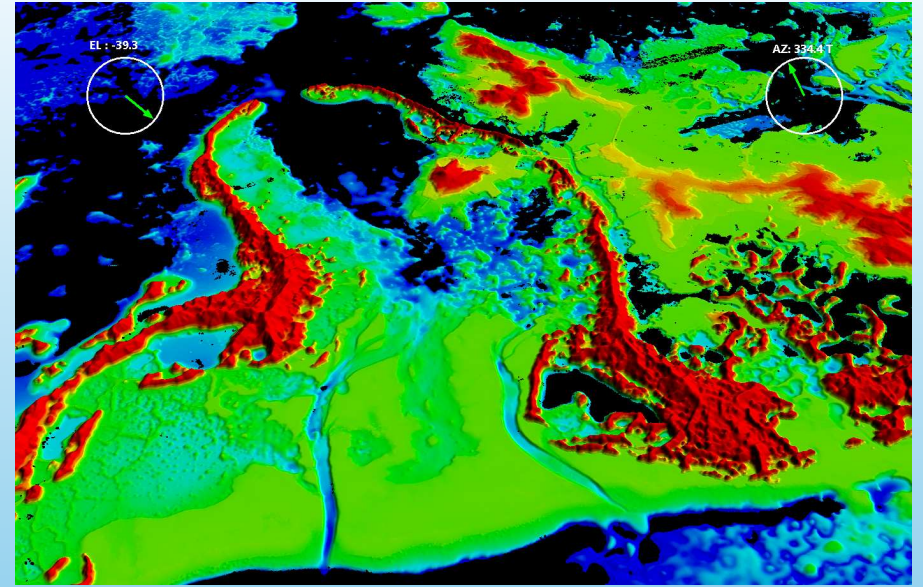
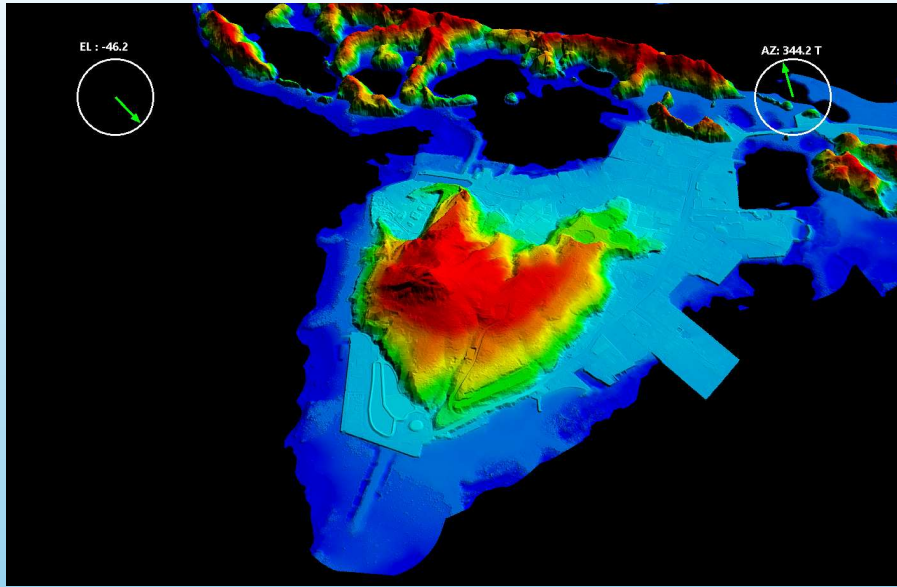
# Lidar Survey

- Woolpert - United States Army Pacific
  - Collection - July-August 2021
  - Bathy-Topo of Main island
  - H-UTM 53 N      V-EGM08
  - Data
    - Aerial image (8cm)
    - TopoBathy DEM (1m)
    - TopoBathy DSM (1m)
    - Intensity (Topo-Intensity, Bathy-Reflected)
    - StDevGrid (Topo and Bathy)
    - Point Cloud (Classified)



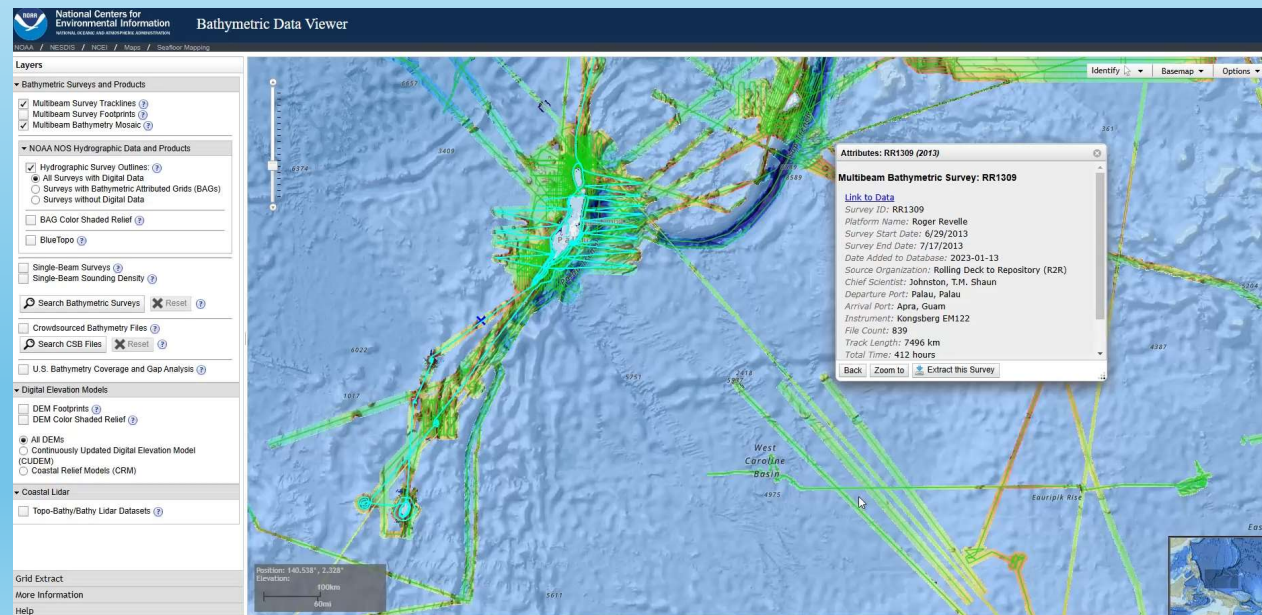
Leica Hawkeye 4x  
System





# Offshore Bathymetry

- Collect and Archive
- Raw Multibeam/Processed data

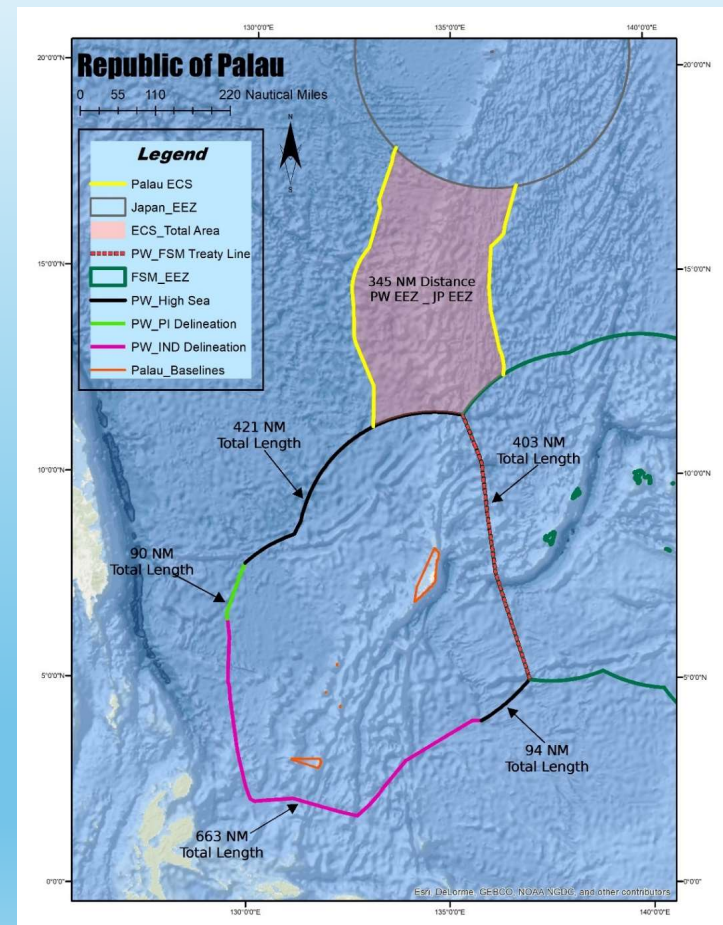
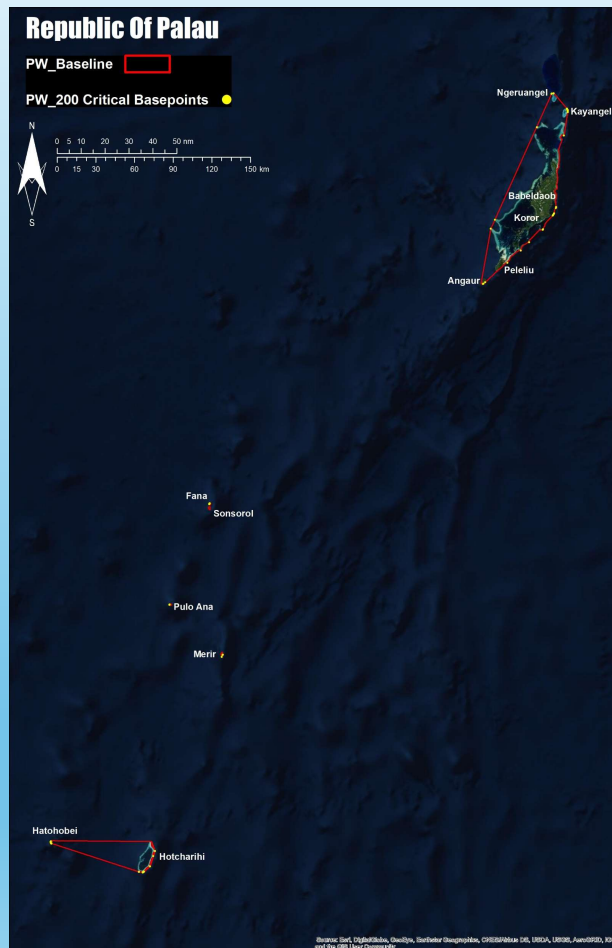


# Maritime Delimitation

- Lead Technical Member of the Palau Territory and Boundary Task Force (TBTF)
  - Support ongoing Negotiations with the Philippines and Indonesia
  - Update to Palau's maritime baselines and maritime zones
  - Support Extended Continental Shelf (ECS) Program
  - Naming of Underwater Features



# Maritime Delimitation



# Naming of Underwater Features

63  
Features  
Named

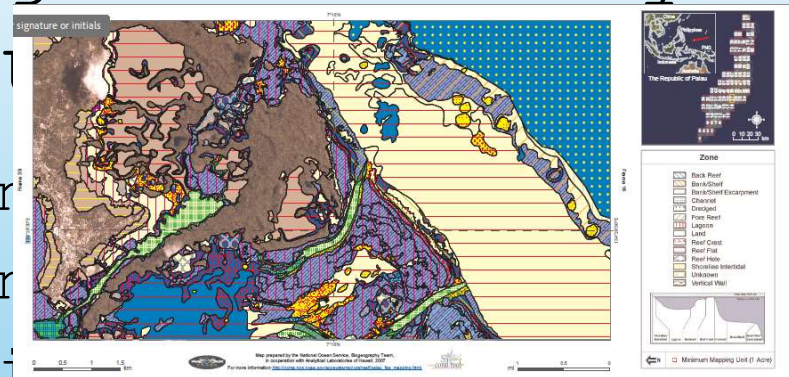


# Marine Spatial Planning

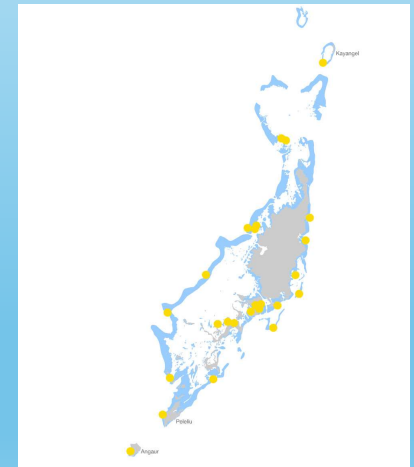
- MAFE
- Offshore- Completed
  - Fisheries centric
  - Limited datasets (Bio regions, geographical features and some oceanographic information)
  - Analysis through SPC
  - Recommendations have been provided to Legislative branch for consideration.
- Nearshore – ongoing
  - Data collection (Many data sets)
  - Community based planning

# Oceans Accounting- Inventory and value of natural resources

- Bureau of Budget and Planning
- Tourism valuation is mainly for
- PALARIS -Extent and Condition
- Complements MSP work



NOAA Habitat Map  
2007

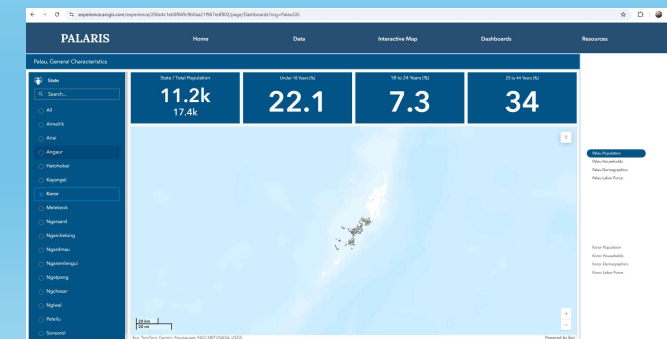
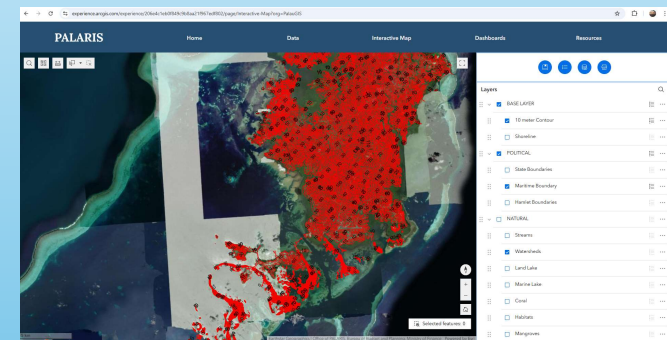
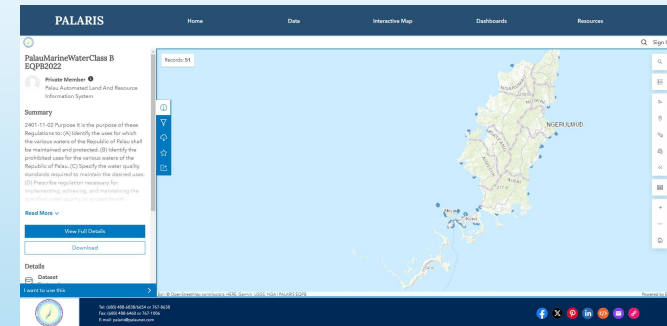
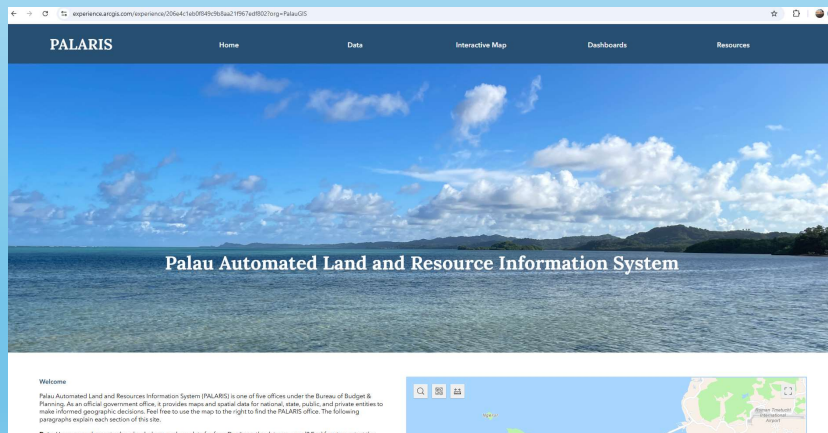


PICRC Monitoring  
Site



# PALARIS Website

- Developed via ArcGIS online
- Linked to Palaugov.pw
- All data to be uploaded for





# Thank You

## Contact Information

- davidi@palaugov.org
- palaris@palaunet.com
- Phone: (680) 488-6654