

22nd Meeting of the South West Pacific Hydrographic Commission

National Report by

PAPUA NEW GUINEA



IHO

International
Hydrographic
Organization

South West Pacific Hydrographic Commission



Main achievements during the year

Trainings/Capacity Building

- 2 Officers completed S-5B and S-8B course run by IIC sponsored by AHO
- 2 Officers participating in SWPHC Hydrographic Leaders Program

Workshops/Conferences attended

- UN-GGIM Regional Workshop on UN-IGIF for PICs, 11-15 Nov 2024, Suva Fiji
- UN-GGCE International Workshop on the Integration of Terrestrial, Maritime, Built, and Cadastral Domains: "Joining Land and Sea", 2-5 December 2024



IHO

International
Hydrographic
Organization



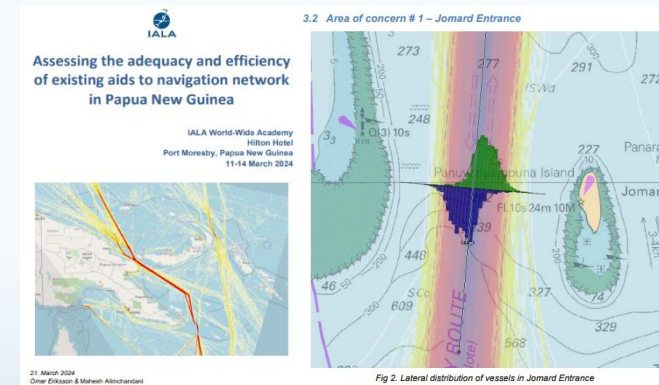
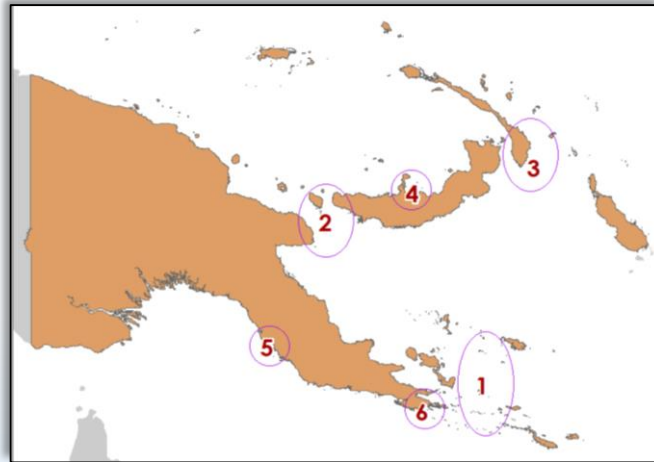
Main achievements during the year

Navigation Risk Assessment

- Engaged IALA WWA/AMSA to conduct IALA Risk Assessment of 4 zones, *Jomard Entrance*, *Vitiaz Strait*, *Kimbe Port*, *China Strait*

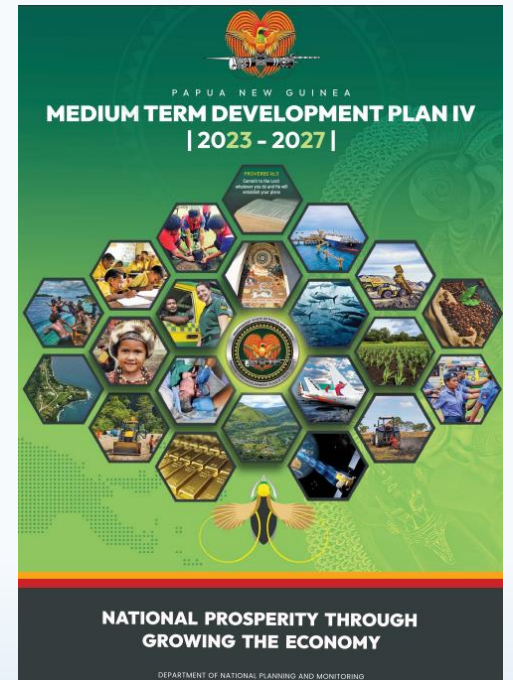
Outcomes

- Define, name and chart major shipping lanes
- Gathered and classified ship accident and incident data (30 incidents last 3 yrs)
- Mechanism for prompt issue of MSI for Cat. 1 light outages.



Main challenges and/or obstructions

- Hydrographic survey & cartographic capability
- Tide Gauge Management (5 stations)
- Marine Spatial Data Governance (National Ocean Policy)
- High-level awareness on hydrography (Align to MTDPIV)



IHO

International
Hydrographic
Organization



Any other matters of interest

- **GEBCO & Seabed 2030**

- Acknowledged contribution of coastal data provided by Greenwater Foundation, TCarta and Caladan Oceanic in 2024, towards GEBCO Seabed 2030.
- SDB Date 7,375.9km² New Britain, Louisiade Archipelago and Bougainville

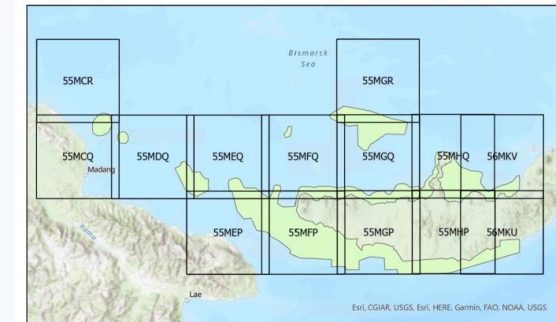


Figure 2: Sentinel-2 Tiles selected.

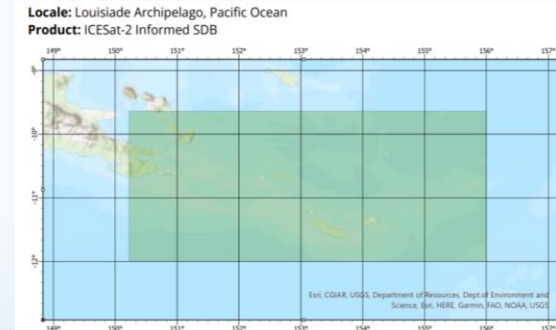


Figure 1: Area of Interest for SDB production surrounding Louisiade.



IHO

International
Hydrographic
Organization

