

South West Pacific Hydrographic Commission

Marine Spatial Data Infrastructures Working Group (MSDIWG) Annual report



IHO

International
Hydrographic
Organization

South West Pacific Hydrographic Commission



Overview

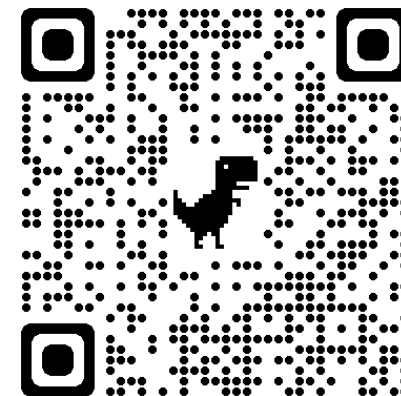
HOME > SOUTH WEST PACIFIC HC > MSDIWG

MSDIWG

The Marine Spatial Data Infrastructures in the South West Pacific Region was created with the propose to promote the sustainable development and use of the oceans, seas and inland waters in line with the United Nations Sustainable Development Goals.

The SWPHC MSDIWG is a subsidiary body of IHO's regional South West Pacific Hydrographic Commission (SWPHC). Its work is subject to SWPHC approval.

SWPHC MSDIWG effort is focused on the SWPHC Workplan 2022-2023 and the nine Strategic Pathways from the United Nations Global Geospatial Information Management, Integrated Geospatial Information Framework. (UN-GGIM IGIF) - <https://ggim.un.org/IGIF/overview>



Chair:	Helen Phillips (UK Hydrographic Office)	helen.phillips@ukho.gov.uk
Vice Chair:	Belen Jimenez Baron (NIWA, Seabed 2030 – Pacific Ocean Regional Center)	belen.jimenezbaron@niwa.co.nz
Secretary:	Daniel Miners (UK Hydrographic Office)	daniel.miners@ukho.gov.uk
Members:	List of WG Members (as of 28 August 2024)	



IHO

International
Hydrographic
Organization



Operations through the year

- Increased regional participation
- 6 Working Groups held
- Published all WG Minutes and Agendas on IHO SWPHC MSDI website
- Continued with meeting video recordings to increase accessibility
- Change of Chair and Vice Chair



IHO

International
Hydrographic
Organization



Our new Goals for 2024 onwards

GOAL 1.

- To work in the “Pacific Way”

GOAL 2.

- Members understand and know how to use IGIF to best support their needs in an applicable way.

GOAL 3.

- Engage with regional organisations to encourage Coastal States within the region to share data.



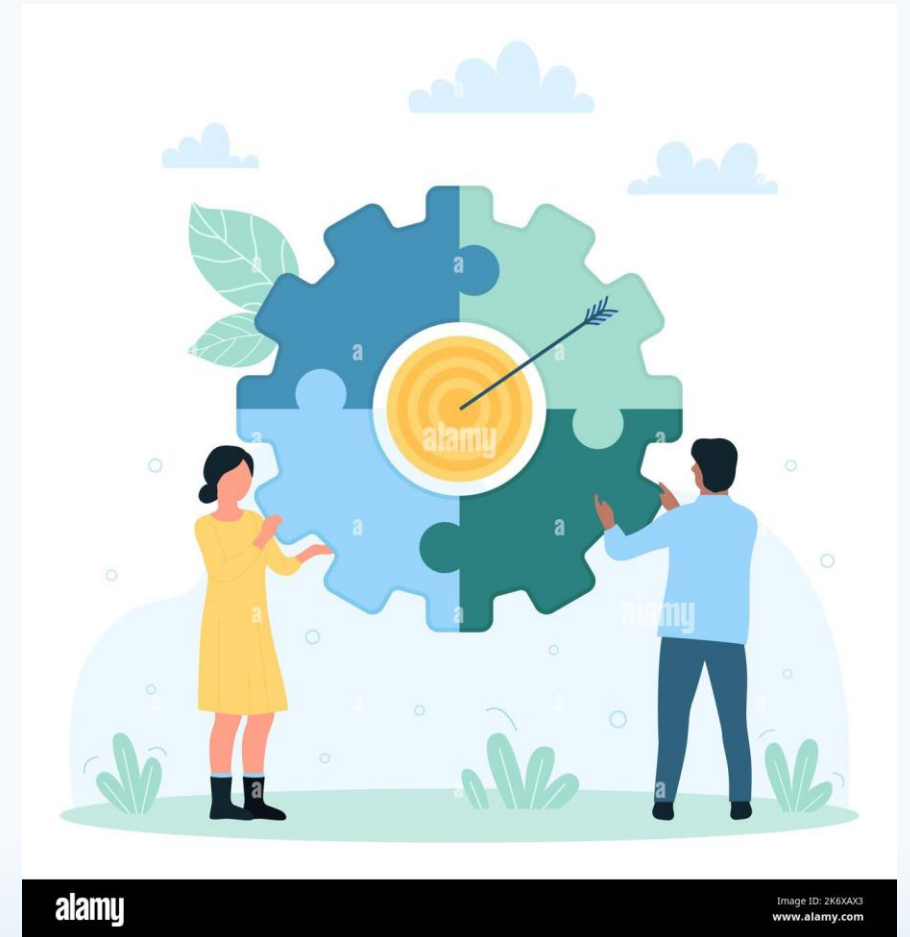
IHO

International
Hydrographic
Organization

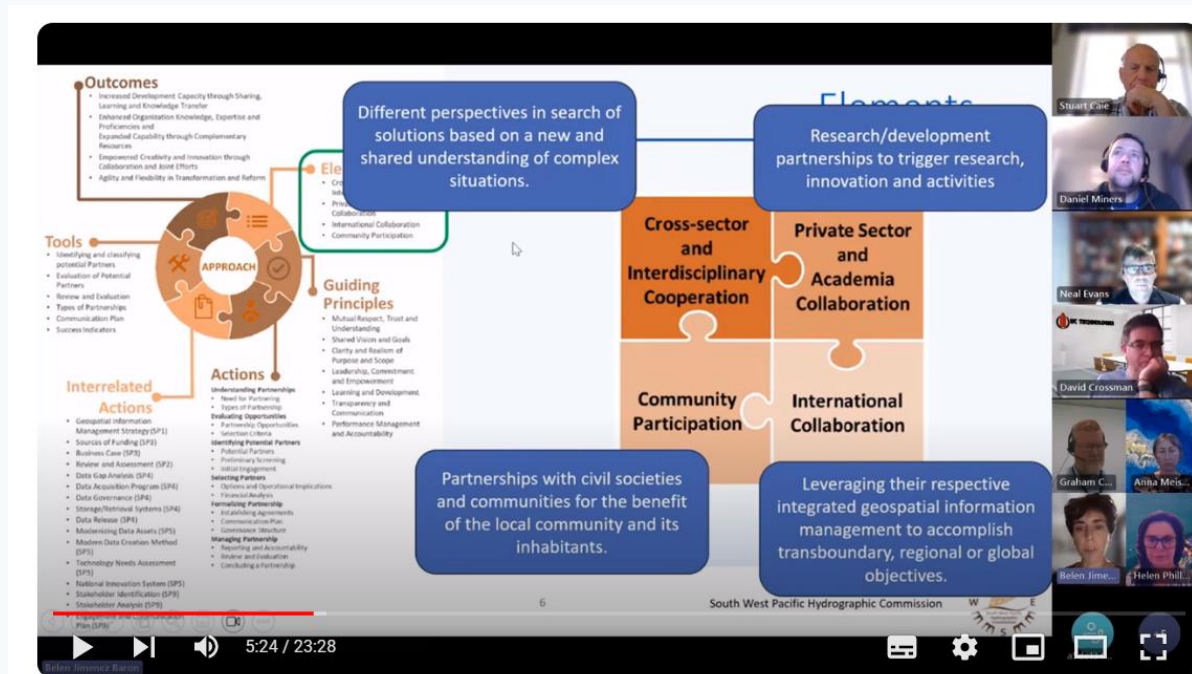


Activities through the Year

- Updating our Goals and Objectives
- Aligned with and cascaded from RHC Workplan
- Members perspective at the forefront
- New Work Tracker
- New Engagement Matrix and Interaction Map

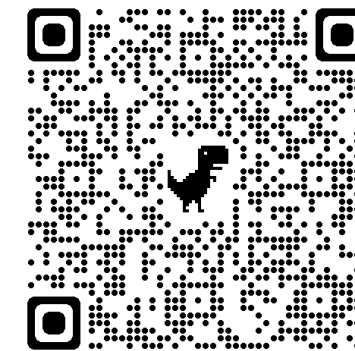


IGIF Short Videos & Data Sharing Publication



Why should we share data?

Unlocking the value in hydrographic offices' data



IHO

International
Hydrographic
Organization



What next

- New Chair and Vice Chair
- Continue progress on our actions from our work plan
- Reflect learning from the IGIF Talanoa into our activities
- Review of ToR



IHO

International
Hydrographic
Organization



SWPHC22 is invited to

1. Note the report
2. Endorse the Chair and Vice Chair appointments
3. Promote the IGIF Video's and “Why should we share data” publication
4. Encourage member nations to join and participate in future meetings of the SWPHC MSDIWG



IHO

International
Hydrographic
Organization

